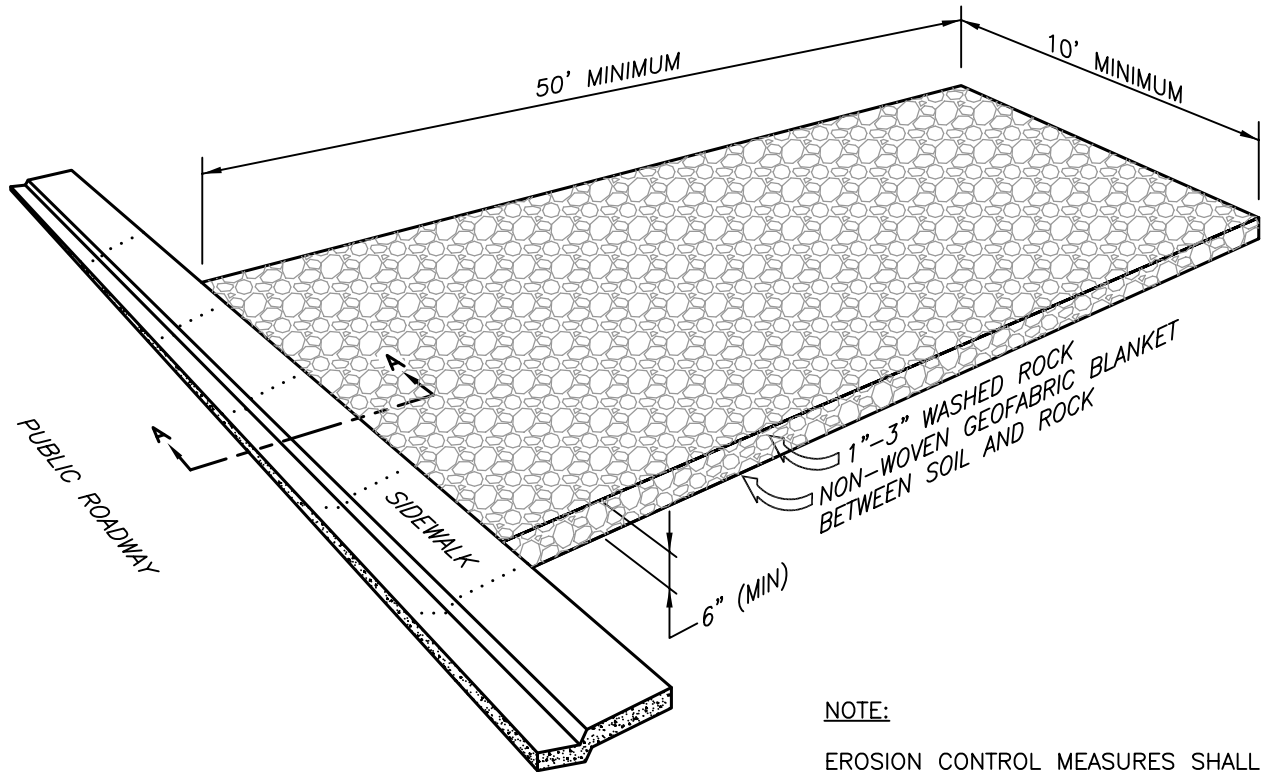
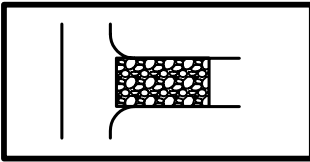
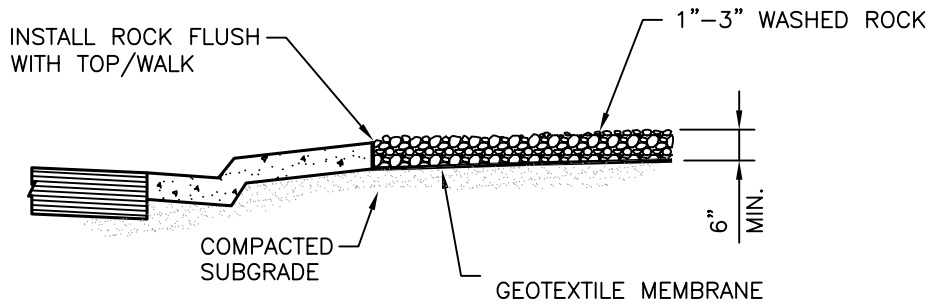


**NOTE:**  
 DEPENDING ON CONFIGURATION,  
 ATTACH FABRIC TO WIRE MESH  
 WITH HOG RINGS, STEEL POSTS  
 WITH WIRES OR WOOD POSTS  
 WITH STAPLES



**NOTE:**

EROSION CONTROL MEASURES SHALL BE MAINTAINED AT ALL TIMES.

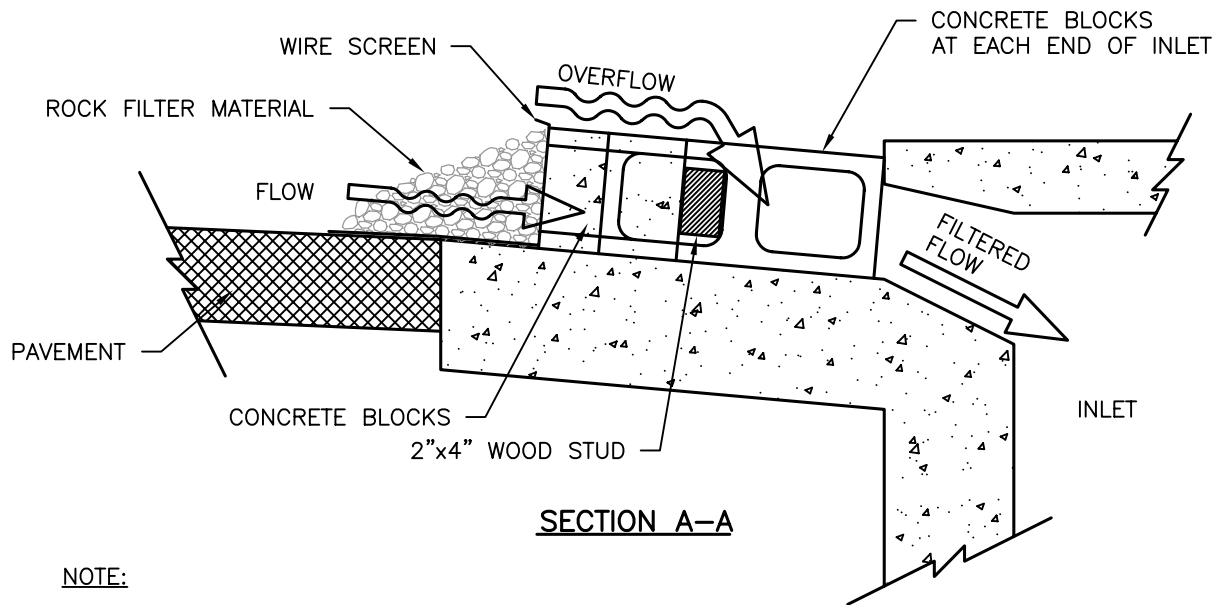
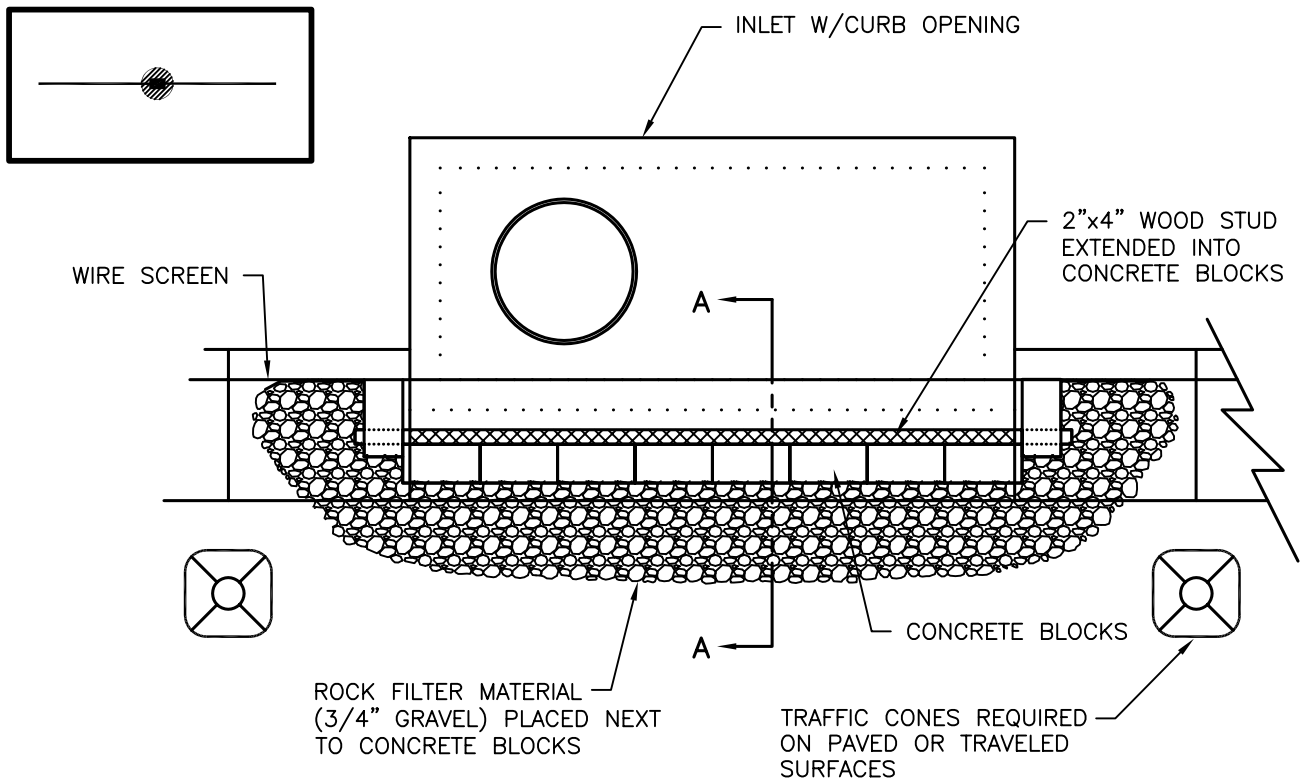


**SECTION A-A**

**CONSTRUCTION STAGING PAD**

**NOTES:**

1. ALL ROCK TO BE REMOVED UPON COMPLETION OF CONSTRUCTION.
2. PUBLIC ROADWAY TO BE KEPT CLEAN AND FREE OF MUD, DIRT AND DEBRI AT ALL TIMES.



**NOTE:**

EROSION CONTROL MEASURES SHALL BE MAINTAINED AT ALL TIMES.

**CURB INLET GRAVEL FILTER**

DETAILS BASED ON THOSE PROVIDED BY THE CITY OF BROOMFIELD, COLORADO, AND URBAN DRAINAGE & FLOOD CONTROL DISTRICT.

CITY OF RAPID CITY

PUBLIC WORKS DEPARTMENT

DATE: 5-1-07

**CURB INLET GRAVEL FILTER**

SEC. SHT.  
**146-3**